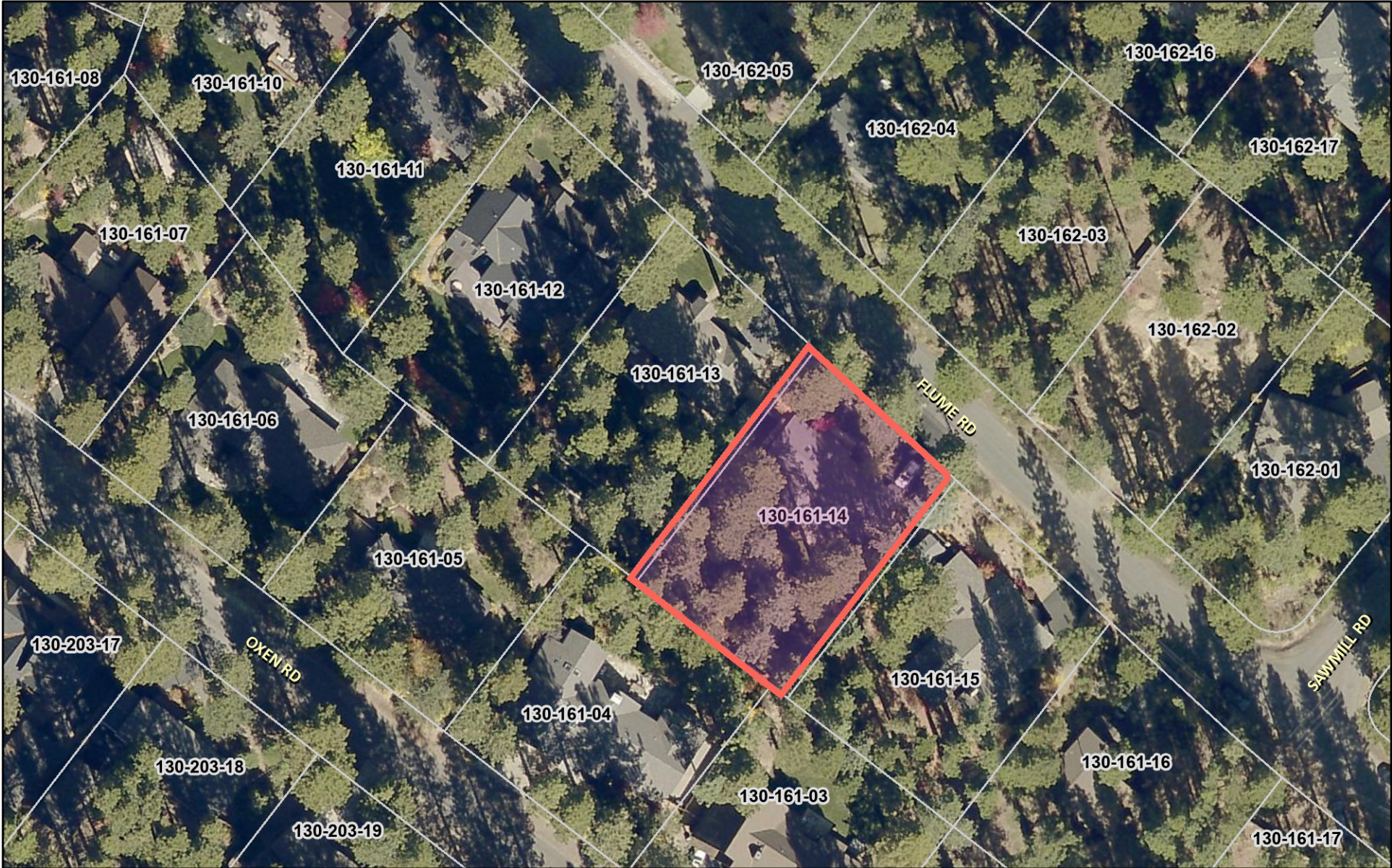
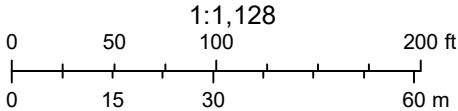


# 1077 Flume Road, Incline Village, Lake Tahoe, NV



July 2, 2021

APN



Source: Esri, Maxar, GeoEye, Earthstar Geographics, CNES/Airbus DS, USDA, USGS, AeroGRID, IGN, and the GIS User Community

This information for illustrative purposes only. Not to be used for boundary resolution or location and not intended to be used for measurement, calculation, or delineation.